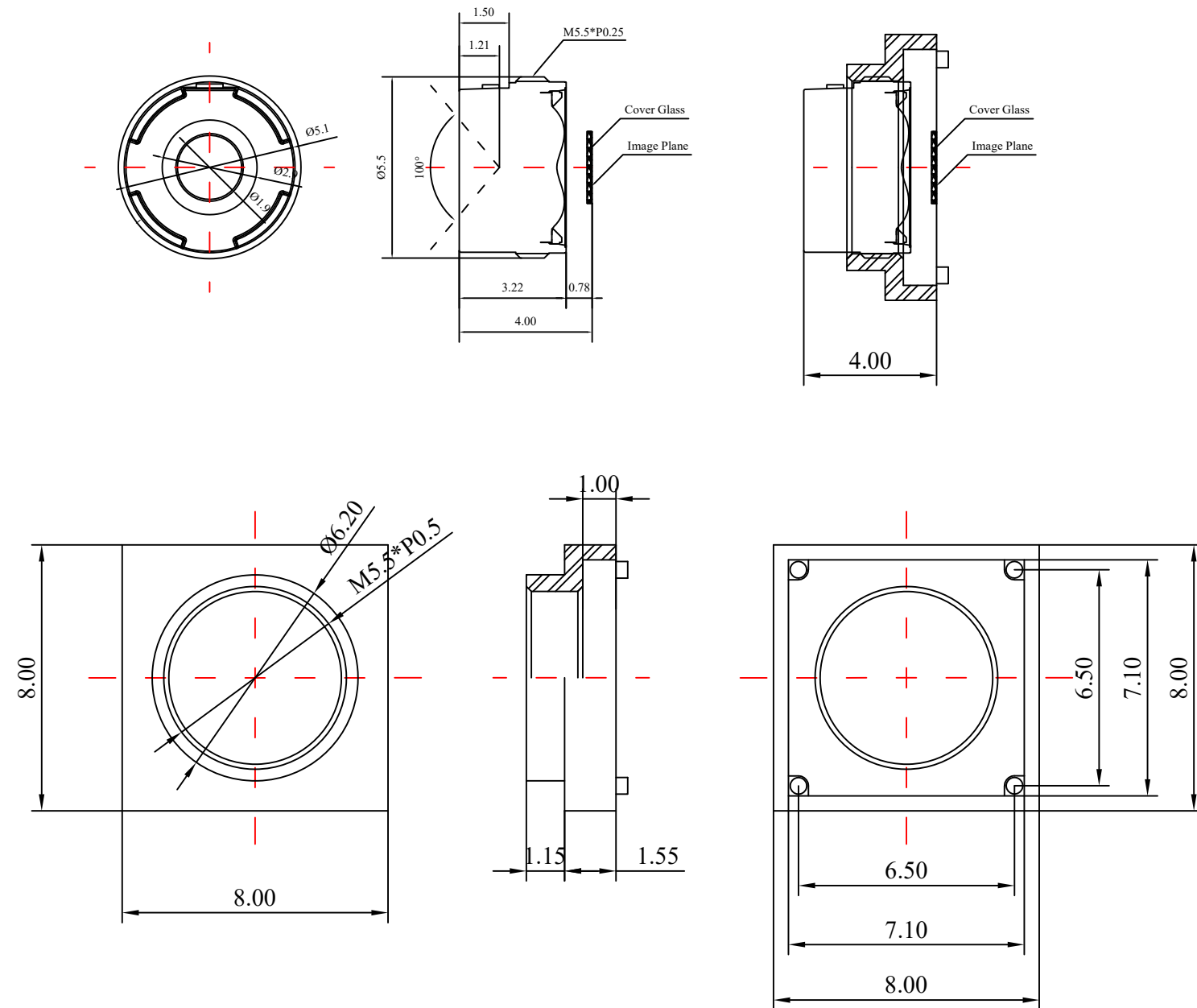


1	Type	M5.5 Lens	
2	Resolution	MP	
3	Image Format	1/4"	
4	Image Circle	φ4.90mm(MAX)	
5	EFL	2.07mm	
6	TTL	4.0mm	
7	F/NO.	F2.4	
8	FFL (M)	0.78mm	
9	BFL (O)	1.062mm	
10	For Sensor	1/4"	
11	F.O.V	Horizontal	81.3°
12		Vertical	65.8°
13		Diagonal	94.6°
14	TV Distortion	<-32.5%	
15	Relative Ill.	>31%	
16	Chief Ray Angle	<37°	
17	M.O.D	0.1m~∞	
18	Mount Type	M5.5*P0.25	
19	Dimension Figure	φ5.5*L3.22mm	
20	Lens Structure	5P	
21	IR-Filter	IR650nm	
22	Waterproof	No	
23	Weight	---	
24	Iris Operation	Fixed	
25	Zoom Operation	Fixed	
26	Focus Operation	Manual	
27	Operating Temperature	-15° ~+45°	
28	Storage Temperature	-15° ~+45°	



Scale	Remark	Tolerances	Date	Revised		福州创安光电科技有限公司 FUZHOU CHUANGAN OPTICS CO., LTD
4:1	X	±0.2	2022-06-07	CH2030AB+5223A Rev1.0		
	X.0	±0.15				
Units	X.00	±0.10	Design	Linda	2022-04-27	
	X.000	±0.001	Checked	Anna	2022-05-16	
mm	Angle	±0.5°	Approval	Sanmu	2022-05-23	

